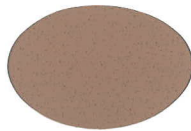


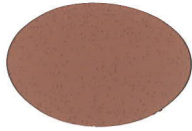


PRISM PIGMENTS

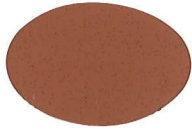
Color That's Made to Order



P0610
Watermelon



P0620
Coral



P0640
Sunset



P3210
Medium Buff



P3220
Yellowstone



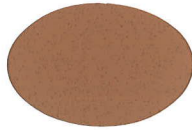
P3240
Harvest



P1110
St. Paul Buff



P1120
Peach



P1140
Bonfire



P0810
Lady Slipper



P0820
Mauve



P0840
Leather



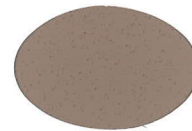
P2910
Mesa



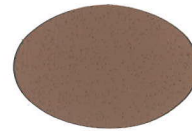
P2920
Sahara



P2940
Rattan



P1810
Bisque



P1820
Strawberry



P1840
Red Barn



P4110
Chestnut



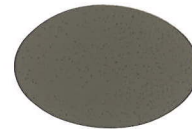
P4120
Woodchip



P4140
Walnut



P4510
Suede



P4520
Chocolate



P4540
Oxford Brown



P5710
Wagon Wheel



P5720
Timberwolf



P5740
Derby



P5810
Chamois



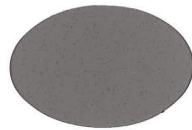
P5820
Wicker Tan



P5840
Ash Brown



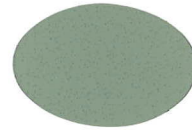
P9110
Slate Grey



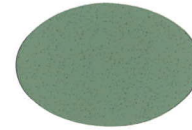
P9120
Dolphin



P9140
Gun Metal



P9530
Seafoam**



P9560
Light Jade**



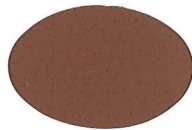
P9030
Shadow Slate**



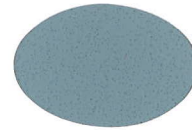
P9420
Sandy Buff



P5860
Sable



P1860
Northern Lights



P9920
Blue**



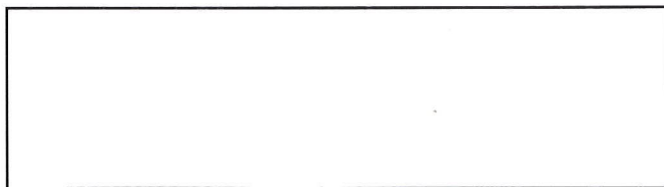
P2960
Cornsilk



P9160
Ebony

****denotes special order**

The color of raw materials, or a sample strip, is subject to variation from the color chip reproduced above. Colors above are as accurate as can be produced using the finest materials of reproduction. Jobsite variations from the above color may occur due to differences in local raw materials and methods of application. Before final color selection is made, a jobsite panel should be erected and approved.



1251 Arundel Street, St. Paul, MN 55117
Phone (651) 488-4250 • Fax (651) 488-6091 • Toll Free (888) 440-4250
A Division of Mix Manufacturing, Inc.

www.prismpigments.com